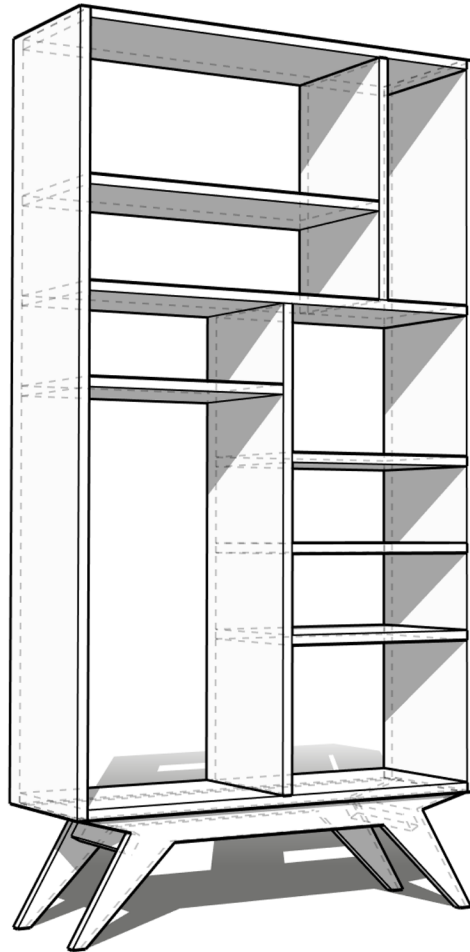




## MID-CENTURY MODERN PLYWOOD BOOKCASE PLANS



## BEFORE GETTING STARTING.

This is a pretty straight forward project but I do recommend a couple of things. One, make sure your blades are sharp. That goes for and circular saw blades and jigsaw blades. Hardwood plywood veneers are SUPER thin and prone to tearing out or sanding through them. Aside from that, I think it would be awesome to see some modified versions of this project. Whether that means customizing the base or the arrangements of the shelves, be sure and tag me or DM me a photo on Instagram @modernbuilds. I'd love to see it.

## STUFF I USED:

3/4" Maple Plywood (From Home Depot)

Kreg Jig Drill Bit: <https://amzn.to/2Cvv8lu>

\*alternatively, a 1/8" bit followed by 3/8" bit

1 1/4" Kreg Jig Screws: <https://amzn.to/2RdbUzT>

3/8" Oak Plugs: <https://amzn.to/2BFIMCe>

Gorilla Wood Glue: <https://amzn.to/2ScCVKd>

Maker Brand Simple Finish w/ Wax: <https://goo.gl/hTEjBY>

CLEAN Jigsaw Blades: <https://amzn.to/2Rcn4hB>

Multi-Square: <https://amzn.to/2SiHy5x>

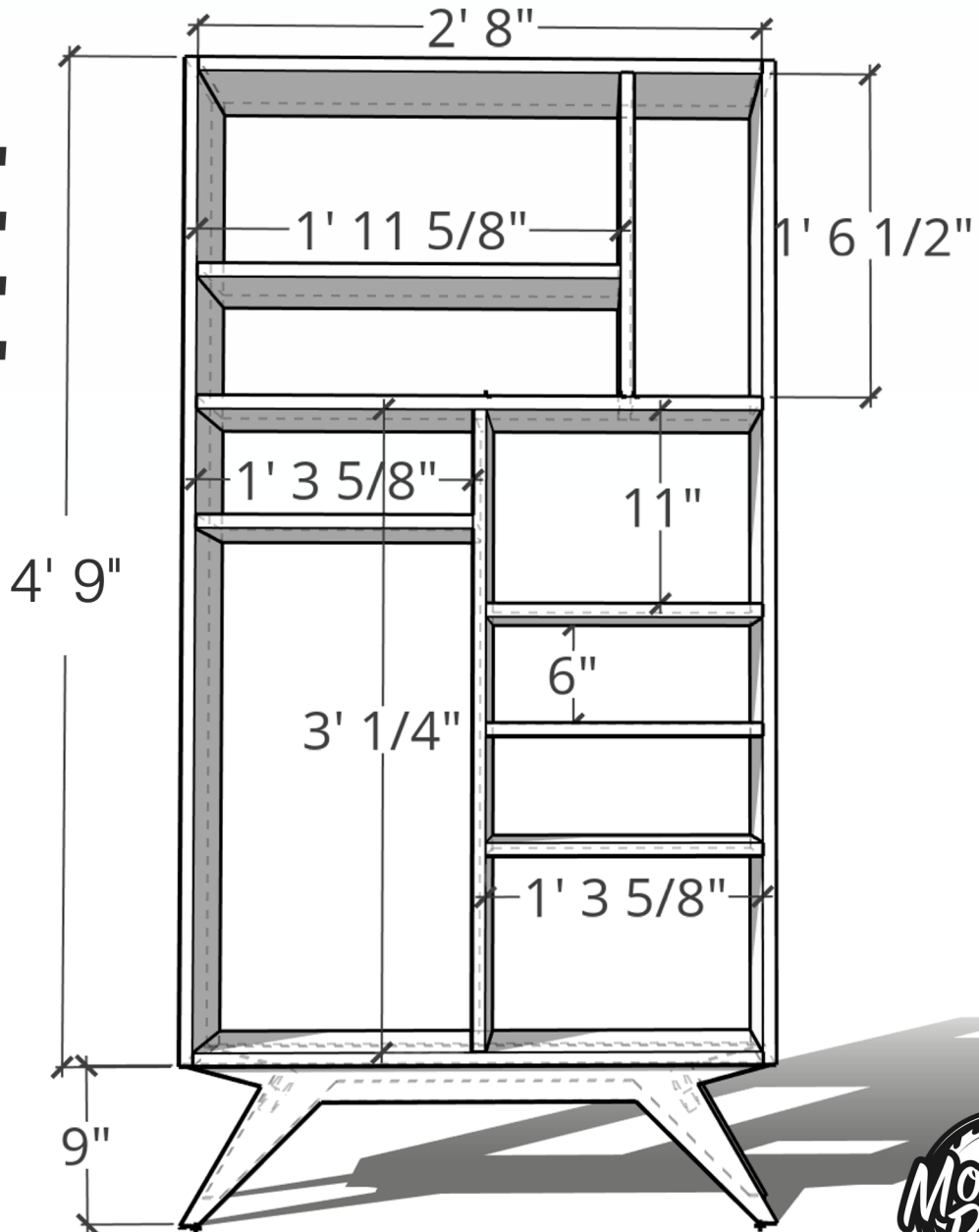


## THE CASE:

The case, itself, is made from a single sheet of plywood. I got my sheet cut into four 11" wide pieces on the panel saw at home depot. Then, I cut the pieces to length at the miter saw.

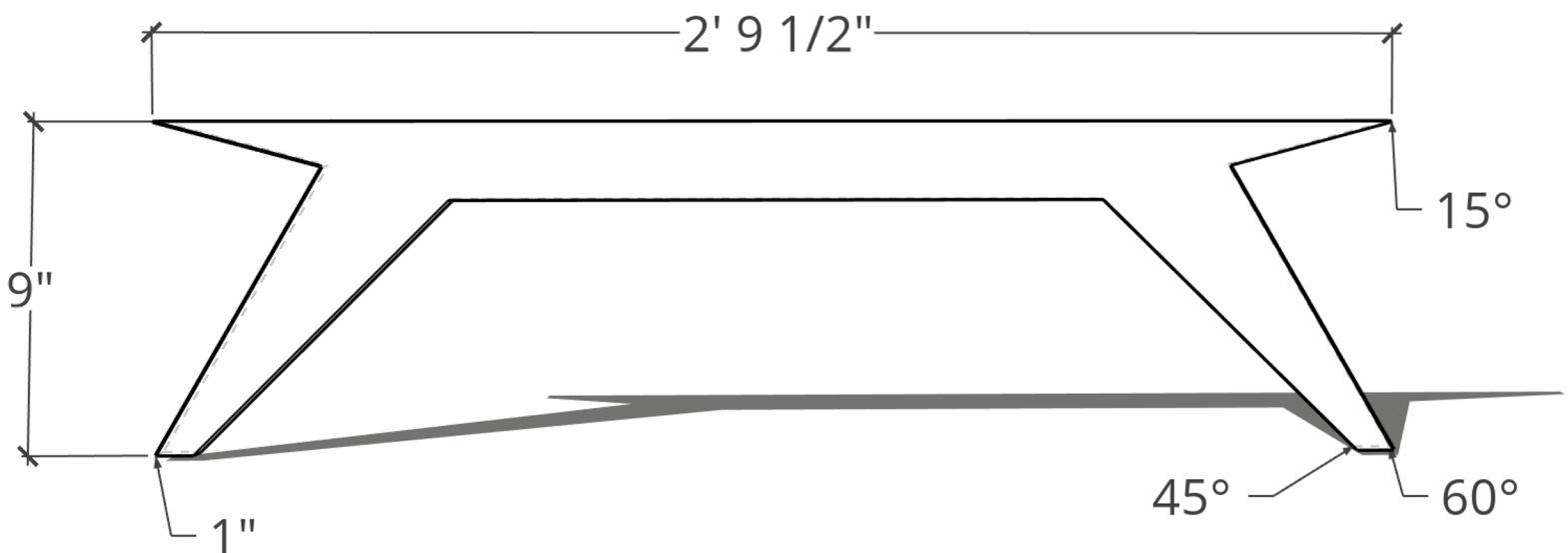
## CUT LIST:

- 2 @ 57"
- 3 @ 32"
- 1 @ 36 1/4"
- 1 @ 23 5/8"
- 1 @ 18 1/2"
- 4 @ 15 5/8"



## THE BASE:

The base for this bookshelf is as basic as you can get. There are only 3 angles involved and it's all about connecting the dots. I used a multi-square which is just a cheap angle guide from Harbor Freight, but anything that can make and measure angles should work. The base is 9" tall but also looks great at 6" and 12" tall. I cut the pieces with an "extra clean" jigsaw blade from bosch and it worked great. Just take your time and follow the line carefully to limit sanding. I chose to inset the legs 3/4" from the front and back edge of the bookcase.



# THAT'S IT!!

Good Luck, I hope these plans help. If you've got questions or see any errors in the plans, please let me know. You can usually reach me pretty quick with a DM on Instagram @modernbuilds.

Don't forget to tag me if you post pictures of any Modern Builds furniture you build! I love seeing what people make.

Oh, and I should mention. If you somehow stumbled upon these plans without seeing the build video on my youtube channel, make sure and check that out. Just search Mid Century Modern Bookshelf on Youtube and you'll find it. -Mike

